

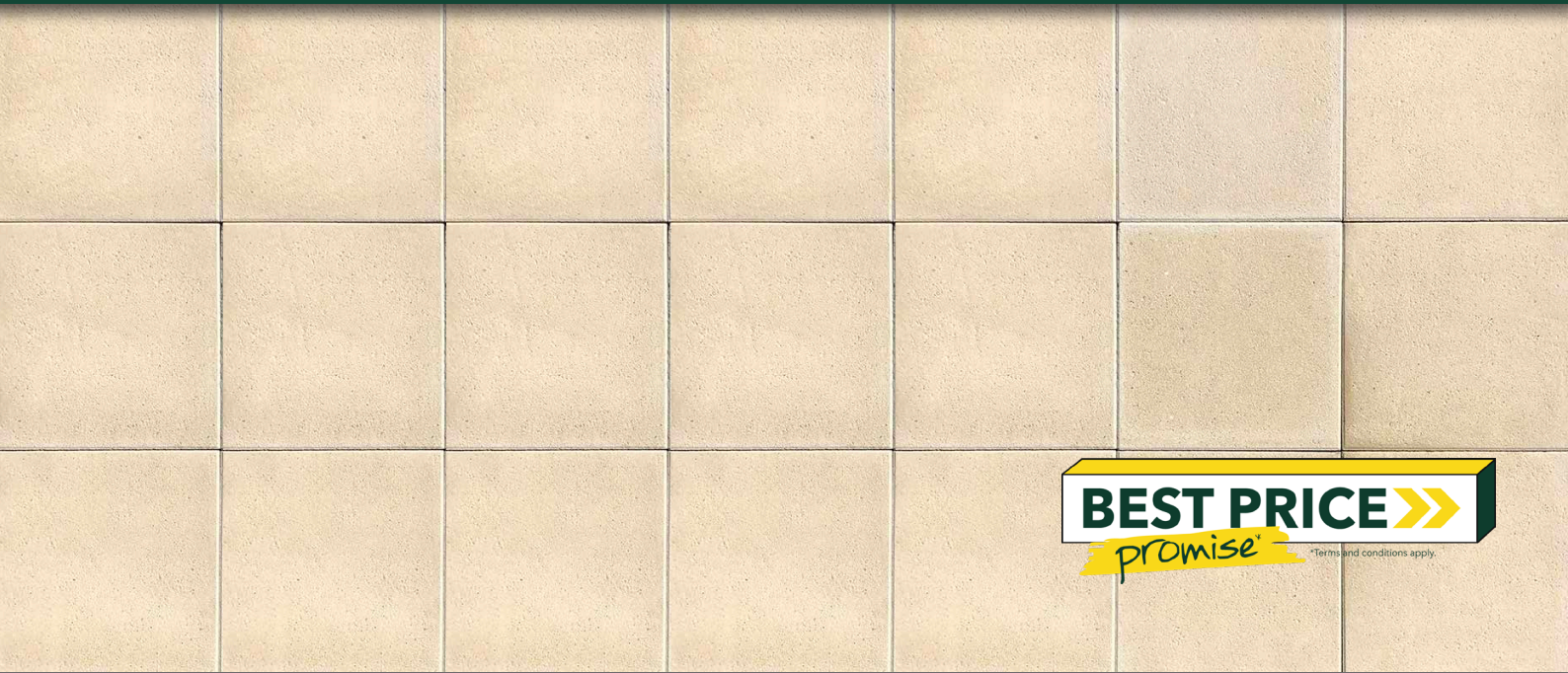
# CLASSIC STONE PAVERS



Concrete Pavers • Stone Pavers • Tiles • Garden Walls & Edging  
Retaining Walls • Concrete Sleepers • Concrete Blocks • Wall Cladding



# CLASSIC STONE PAVERS



## FEATURES

- Hardwearing
- Easy to install
- Slip resistant
- Smooth finish
- Matching coping
- Free samples available

## SUITABLE FOR

- Entertaining areas
- Patios and alfresco
- Garden paths
- Walkways



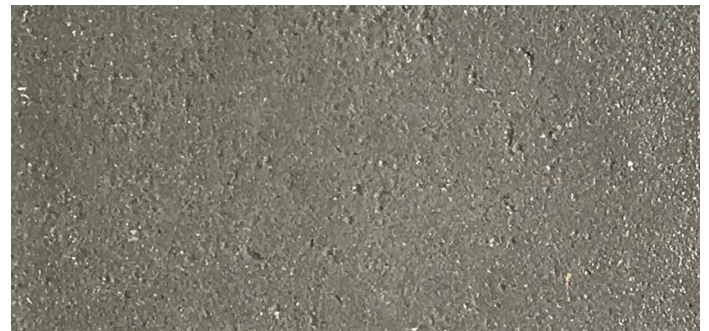
Specifications	Size	No. per m <sup>2</sup>	Weight per m <sup>2</sup>	m <sup>2</sup> per crate
Classic Stone Pavers	400 x 400 x 40mm	6.25	89kg	18.7
Bullnose	400 x 400 x 40mm	N/A	14kg	N/A

## COLOUR RANGE\*

Limestone



Charcoal



\*Colours are an indication only. Always sight physical product colour samples before purchase.



[www.australianpaving.com.au](http://www.australianpaving.com.au)

  [australianpavingcentre](https://www.instagram.com/australianpavingcentre)

